

Linx 9900 Series



9900 | 9910 | 9920 | 9940 | 9940 Spectrum

Product Overview



Making printing one less thing to worry about

Linx 9900 Series

9900 | 9910 | 9920 | 9940 | 9940 Spectrum

Discover the Linx 9000 Series



Eliminate unplanned downtime



Automatic printhead cleaning

Linx SureClean® wash station

The SureClean wash station cleans and dries the printhead, allowing any operator to perform cleaning easily and safely. No contact with cleaning fluid, no training required.



Never forget to clean

Customisable maintenance reminders

Reduce unplanned stoppages and improve print quality by scheduling maintenance with customisable printhead cleaning alerts.

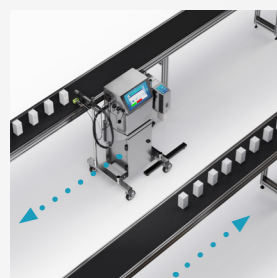


Trouble-free restarts after power loss

Linx PrintProtect® battery backup

Eliminate delayed restarts with built-in power loss protection. The battery backup allows up to 3 minutes of continued printing, followed by a full shutdown if power isn't restored, ensuring the printer is ready on startup.

Maximise changeover efficiency



Fast line changes

Linx PrintProtect® battery

Save production time by moving the printer without stopping the jet. The Linx PrintProtect battery allows up to 9 minutes to relocate the printer and resume printing immediately.



Error-free messages from external devices

Linx Message Studio™ and QuickSwitch®

Create, edit and change messages from a PC with Linx Message Studio. Change messages in real-time from external production devices or a barcode scanner using Linx QuickSwitch, for fast changeovers and no errors.

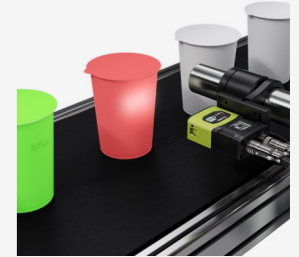


Every code present and correct

Eliminate rework and rejects

Linx Iris® vision system

Check every code as it's printed; check presence, position, characters and quality to prevent rework and rejects. The Linx Iris vision system is easy to set up and use, no external power or laptop needed, simply connect the two cables directly to the printer.



Simple to use for any operator

Intuitive user interface

Change the language in seconds to prevent operator errors. Customise the home screen with frequently used functions and restrict access with a supervisor lock.



GS1® Ready

Unique GS1 code builder

Create error-free GS1-compliant Data Matrix codes using the Linx 9000 Series' mistake-proof, step-by-step GS1 code builder tool on the printer interface.



Reduce running costs

Use 48% less ink

50 micron printhead

Reduce ink use by up to 48% with the 50 micron printhead option; more print, less ink. Using the Linx durable printhead design, the MK11 Mini printhead is capable of printing smaller characters and 2D codes.



42% solvent reduction

Active Airflow Control technology

Reduce solvent consumption by up to 42% with built-in Active Airflow Control (AAC) technology option, for lower running costs and fewer solvent refills.

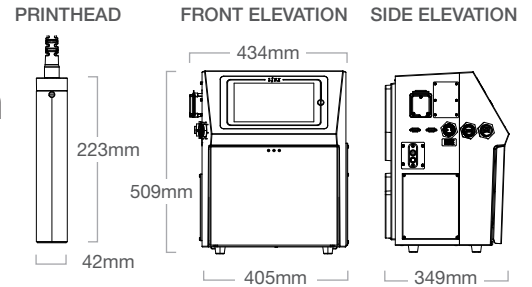


Without AAC With AAC

9900 Series

9900 | 9910 | 9920 | 9940 | 9940 Spectrum

Technical Specifications



	LINX 9900	LINX 9910	LINX 9920	LINX 9940	LINX 9940 SPECTRUM
LINES OF PRINT	Up to 3		Up to 6		
AVAILABLE NOZZLE SIZES	62 µm, 75 µm	50 µm, 62 µm, 75 µm			
CHARACTER HEIGHT	1.8 to 10.7mm	1.2 to 20mm	1.2 to 20mm	1.2 to 20mm	1.2 to 17mm
MAXIMUM SPEED - SINGLE LINE PRINT (5 DOT HIGH)	2.83 m/s	7.28 m/s	7.28 m/s	9.10 m/s Super-fast tower print 10 m/s	9.10 m/s Super-fast tower print 10 m/s
MAXIMUM SPEED - TWO LINE PRINT (7 DOT HIGH)	1.41 m/s	2.09 m/s	2.46 m/s	2.65 m/s	2.56 m/s
PRINTHEAD	2m conduit, 4m conduit (option), 6m conduit (option (not available on MK11 Mini or 9940 Spectrum)), 90° printhead (option), Hydrogen Peroxide resistant conduit (option), Positive Air (option for dusty environments), Air dryer (option for humid environments)				
SERVICING OPTIONS	Self-service or engineer visit				
EASI-CHANGE® MODULE SERVICE INTERVAL:	up to 18 months (13,000 hours) – dye-based inks, up to 12 months (6,000 hours) – soft pigmented inks*	up to 24 months (17,400 hours) – dye-based inks, up to 12 months (6,000 hours) – soft pigmented inks*		up to 12 months (8,000 hours)	
LINX PRINTPROTECT® BATTERY	Contains rechargeable Lithium-ion battery as standard				
LINX IRIS® VISION SYSTEM	Compatible with all models (option), refer to Linx Iris Technical Specifications				
LINX SURECLEAN® PRINTHEAD WASH STATION	Compatible with all models (option), refer to Linx SureClean Technical Specifications				
USER INTERFACE	10-inch full colour touch screen with tough, solvent-resistant polymer cover				
LINX PRINTERNET®	Linx PrinterNet printer health and production monitoring with remote control (VNC) (option)				
LINX MESSAGE STUDIO®	Create, save, edit and switch messages from a computer; compatible with all models				
GS1® CODE BUILDER	As standard				
PRINT CAPABILITIES	Text, Symbols, Numbers, Sequential numbering, Dates, Times, Rotated character (tower) printing, Inverted printing, Graphics, Logos, Barcodes (ITF 2 of 5, Code 39, Code 128, EAN 13, EAN 8, UPCA, Pharmacode, Data Matrix, QR, RM4SCC-Type C)				
	Dynamic orientation and reverse printing (option)		Dynamic orientation and reverse printing		
	Sequential text				
INK AND SOLVENT	12 hour fluid refill warning				
	Mistake-proof, mess-free ink and solvent refills while printing (0.5 litre ink cartridge, 1 litre solvent cartridge)				
	Dye based and soft pigmented, blacks and colours				Hard pigmented white and colours
	Active Airflow Control for lower solvent consumption and reduced emissions (option (not available on 6m printheads))				
CONNECTIONS	2 x D-type connectors for Product Detector, Shaft encoder/Second product detector, Quadrature encoders for direction applications, and Vision camera				
	Alarm connector for external single stage alarm output (24v) Ethernet for Linx Remote Communications Interface (RCI), Extended QuickSwitch®, REST and Linx PrinterNet. USB for Graphics and logos import, Data backup, Barcode scanner and Wi-Fi Connection for Linx PrinterNet Options: RS232, Parallel I/O, Mains driven alarm, Multi-stage Alarm output				
ENCLOSURE	Stainless Steel				
ENVIRONMENTAL PROTECTION RATING	IP55			IP65	
OPERATING TEMPERATURE RANGE	5-45°C (0-50°C for Linx 1240, 1010, 1014 and 3240 ink types)				5-45°C
HUMIDITY RANGE (R.H., NON-CONDENSING)	90% max				
POWER SUPPLY	100-230V, 50/60Hz				
POWER CONSUMPTION	38W (typical when printing)				
POWER RATING	120W				
WEIGHT	23.2kg (including fluids and 2m printhead)				25.1kg (including fluids and 2m printhead)
REGULATORY APPROVALS	GS CE UL CAN/CSA FCC BIS				

*Dependent on printhead nozzle size
See printer brochure for more details on the wide range of printing capabilities available

Global Sales

+44 (0)1480 302100
sales@linxglobal.com

UK Sales

+44 (0)1480 775 223
uksales@linx.co.uk

France Sales

+33 1 72 07 17 05
info@linx.fr

China Sales

021-80504700
chinasales@linxglobal.com

