



Linx accessories for the Linx 8900 Series CIJ printer

- **Printer and printhead mountings**
- **Product sensors**
- **Shaft encoders**
- **Alarms and RS232 communications**
- **Air knives**
- **Barcode scanners**

LINX

THINKING ALONG YOUR LINES

Printer and printhead mountings for the Linx 8900 Series CIJ printer

Linx offers a wide range of mounting accessories for positioning printers and printheads onto production lines.

Printer mountings comprise robust stainless steel cabinets and tables, which can be moved easily, as required.

The Linx range of printhead mountings offers one of the most versatile means of mounting close to the product to be marked. The range incorporates a number of unique design features that improve performance and minimise downtime during routine maintenance. A variety of head mounting accessories is available to suit individual customer applications.

Applications requiring orientation at non-standard angles can be easily accommodated.

Unique to the range is a relocating mechanism that enables the printhead to be returned exactly to its original position after routine maintenance. This avoids lengthy downtime and rejected product created by laborious trial and error methods of resetting the printhead position.

The range of mountings includes predefined mounting assemblies. The individual parts are fully interchangeable, allowing customers to create their own application specific arrangements.

Accurate printhead positioning

Many mounting options

Well designed parts are quick and easy to assemble and install

Wide range of interchangeable parts to meet current and future requirements

Made of stainless steel and other tough materials for durability

Haltbar range of printer mountings

The concept behind the Haltbar range is to provide a modular and robust range of fixed and mobile options to match customer requirements in washdown environments. Can be assembled on-site with simple tools.

In all configurations, the printer can be bolted to the mounting for additional stability.



8900 Haltbar range shelf
FA62100

Cost-effective and robust shelf for wall-mounting the Linx 8900 printer. Formed from 304 grade 1.6mm stainless steel. Maintains access for routine service, input/output connections, and fluid cartridge change.



8900 Haltbar range bolt-down cabinet
FA62104

For customers who rarely move their Linx 8900 printer and require a cabinet. Can be bolted to the floor for ultimate stability. End caps prevent liquid ingress.



8900 Haltbar range bolt-down stand
FA62101

Good value stand for customers who rarely move their Linx 8900 printer and don't require a cabinet. Perforated shelves and end caps prevent liquid ingress and pooling. Can be bolted to the floor for ultimate stability.



8900 Haltbar range trolley cabinet
FA62105

8900 Haltbar range stand cabinet
FA62106

Printer mounting with cabinet compatible with the current standard range of Linx pole-mount accessories for mounting printheads, wash stations and alarms. Available with either large lockable wheels, or adjustable feet.



8900 Haltbar range trolley
FA62102

8900 Haltbar range stand
FA62103

Compatible with the current standard range of Linx pole-mount accessories for mounting printheads, wash stations and alarms. Available with either large lockable wheels or adjustable feet.

Printhead mountings

Interchangeable parts to create customised structures.

All parts are interchangeable, making it easy to custom-build printhead support structures and modify them when required.



**Printhead bracket,
adjustable – pole mount**
FA62047

This bracket allows the printhead to be adjusted from horizontal to vertical and provides for the mounting of an M18 bodied product sensor and a fibre optic sensor. A printhead cover tube sleeve ensures correct replacement of the printhead after cleaning. For mounting on the end of a pole.

Dimensions (mm): 50 H x 58 W x 152 D



**Handscrew clamp
(printhead bracket)**
FA67056

Can be fitted to the printhead bracket adjustable – pole mount **FA62047** to enable manual fastening without the use of a hexagonal key. This allows more convenient adjustment of printhead mounting assemblies while in use on the production line. Can be ordered separately or as a printhead bracket handscrew pole mount assembly **FA62066**.



**Printhead bracket,
fixed – pole mount**
FA62046

This bracket is designed for applications where no adjustment of the printhead from horizontal to vertical is required. It provides for the mounting of an M18 bodied product sensor and a fibre optic sensor. A printhead cover tube sleeve ensures correct replacement of the printhead after cleaning. For mounting on the end of a pole.

Dimensions (mm): 50 H x 58 W x 100 D



**Printhead bracket,
fixed – direct mount**
FA62044

This bracket is designed for applications where no angular adjustment of the printhead is required. It provides for the mounting of either an M18 bodied product sensor or a fibre optic sensor. A printhead cover tube sleeve ensures correct replacement of the printhead after cleaning. For mounting on a flat surface on the printer or production line.

Dimensions (mm): 52 H x 58 W x 115 D



**Printhead bracket,
handscrew – pole mount**
FA62066

This bracket allows the printhead to be adjusted without the use of a hexagonal key. This allows more convenient adjustment of printhead mounting assemblies while in use on the production line. The Handscrew clamp (printhead bracket) **FA67056** can also be ordered separately.

Dimensions (mm): 50 H x 58 W x 100 D



**Spare indexing sleeve for
printhead cover tube**
FA62057

To position the printhead into a printhead bracket. Mounts onto the printhead cover tube and ensures correct replacement of the printhead after cleaning.



**Base – floor mount,
mobile**
FA62052

A strong tripod base that prevents tilting. To build a moveable printhead mounting structure.

Dimensions (mm): 100 H x 615 W x 535 D



**Base – floor mount,
fixed**
FA62051

A solid disc base for bolting to the floor. Complete with M8 expansion bolt fittings.

Dimensions (mm): 60 H x 200 Ø

Printer and printhead mountings for the Linx 8900 Series CIJ printer



Base – direct horizontal mount FA62050

To mount a pole onto a vibration-free, horizontal mounting surface on the production line. Complete with M6 fittings.

Dimensions (mm): 60 H x 90 W x 50 D



Cross joint FA62048

Allows two poles to be mounted firmly and securely at right angles to each other by means of a hexagonal key.

Dimensions (mm): 100 L x 50 D



Base – direct vertical mount FA62049

To mount a pole onto a vibration-free, vertical mounting surface on the production line or directly onto the printer cabinet. Complete with M6 fittings.

Dimensions (mm): 50 H x 90 W x 60 D



Handscrew adjustable cross joint FA62065

This has the same function as the Cross joint [FA62048](#) but allows manual fastening by means of handscrews.



Poles and in-line joint FA62056, FA62055, FA62058

Two different lengths of 1¼" (32 mm) diameter stainless steel pole provide complete flexibility in printhead mounting configurations as the poles can be used vertically (jointed with the in-line joint) or horizontally. Both pole mount printhead brackets (see next page) can be attached to any of these poles.

Pole 0.5 m [FA62056](#)
Pole 1.0 m [FA62055](#)
In-line joint [FA62058](#)



Handscrew clamp (cross joint) FA67055

Two handscrew clamps can be fitted to the cross joint [FA62048](#) to enable manual fastening without the use of a hexagonal key. This allows more convenient adjustment of printhead mounting assemblies while in use on the production line. Can be ordered separately or as a handscrew adjustable cross joint assembly [FA62065](#).



Printhead wash station FA62068

Spare wash station collection bottle FA900003

Simply bolts onto a pole and enables easy and effective printhead cleaning 'in situ'. Waste ink and solvent are washed into a standard 500 ml Linx solvent bottle (38mm neck). Fits 32mm diameter mounting poles or can be mounted to a suitable vertical surface using M6 size screws.

Dimensions (mm): 204 H x 100 W x 145 D



Cable tidy FA62059

Secures two cables to the outside of 32mm diameter poles. Supplied in packs of 10.

Standard printhead mounting assemblies

These are packs containing the parts necessary for the most common printhead mounting positions.

The height of the printhead mounting bracket can be adjusted manually (via the cross joint), and its orientation varied between horizontal and vertical. A printhead wash station can be added for convenient printhead cleaning. These assemblies can be modified easily if required by adding new parts.



Assembly – floor mount, fixed FA62070

Fixed printhead mounting designed to support the printhead away from the printer, for example on the opposite side of the production line. Can be screwed in place to prevent mounting being knocked out of position. It includes the following parts:

- Base – floor mount, fixed **FA62051**
- Two 0.5 m poles **FA62056**
- 1.0 m pole **FA62055**
- In-line joint **FA62058**
- Cross joint **FA62048**
- Printhead bracket, adjustable – pole mount **FA62047**

Dimensions (mm):
1500 H x 615 W x 200 Base radius



Assembly – floor mount, mobile FA62041

Freely moveable printhead mounting designed to support the printhead away from the printer, for example on the opposite side of the production line. It includes the following parts:

- Base – floor mount, mobile **FA62052**
- Two 0.5 m poles **FA62056**
- 1.0 m pole **FA62055**
- In-line joint **FA62058**
- Cross joint **FA62048**
- Printhead bracket, adjustable – pole mount **FA62047**

Dimensions (mm):
1500 H x 615 W x 535



Assembly – direct horizontal mount FA62043

For mounting onto a vibration-free, horizontal surface on the production line. It includes the following parts:

- Base – direct horizontal mount, fixed **FA62050**
- Two 0.5 m pole **FA62056**
- Cross joint **FA62048**
- Printhead bracket, adjustable – pole mounted **FA62047**

Dimensions (mm): 1000 H x 615 W



Assembly – direct vertical mount FA62042

For mounting onto a vibration-free, vertical surface on the production line.

- Base – two direct vertical mount, fixed **FA62049**
- 1.0 m pole **FA62055**
- 0.5 m pole **FA62056**
- Cross joint **FA62048**
- Printhead bracket, adjustable – pole mounted **FA62047**

Dimensions (mm): 1000 H x 615 W

Pole specification

31.8mm outside diameter x 2mm wall thickness.
Welded stainless steel tube.
End caps are available as a spare from Linx.

Product sensors for the Linx 8900 Series CIJ printer



On any production line it is vital that on-line printers are correctly and consistently triggered to print a high quality message in the right place at the right time. Poorly placed or partly missing codes may result in products being rejected.

Photocells and other sensors are simple and reliable devices that can be used with a printer to achieve this consistency, thereby maximising coding efficiency.

The Linx range of product sensors supports coding of products of different sizes, colours and materials:

- Photocells and inductive switches to sense a wide range of products including very small objects and those with highly reflective surfaces
- Specialised sensors to detect registration marks and products that contrast poorly with the background.

All Linx sensors are robust, with full screening, EMC compliance, a high degree of environmental protection (minimum IP65) and short-circuit proof transistor outputs.

Wide range of sensors to detect different types of product

Tested with Linx printers – meet E.U. and U.S. EMC standards

Robust designs – protected to IP65 or above

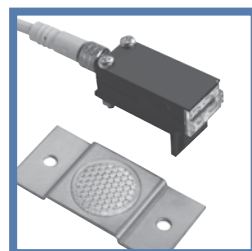
Fitted connectors – ready to install

Mounting brackets for convenient installation

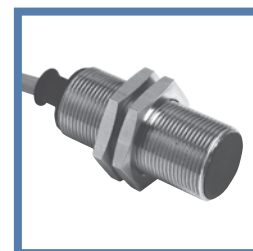
Product sensors



Reflection light beam scanner
FA61105







Retro-reflective light beam switch with polarisation filter
FA61107



Inductive proximity switch
FA61100

Sensor type	Reflection light beam scanner FA61105	Retro-reflective light beam switch with polarisation filter FA61107	Inductive proximity switch FA61100
Operating principle	Infra-red light reflected by the product	Product breaks light beam	Electromagnetic induction
Application	General-purpose	Shiny, reflective products such as glass bottles and foil trays	Ferrous and non-ferrous metals, for example cans
Sensing range	20 – 170 mm (adjustable)	100 – 1000 mm	3 – 9 mm
Material	M18 chromium plated brass body and nuts	Rectangular re-inforced plastic body	M18 chromium plated brass body and nuts
Environmental protection rating	IP65	IP67	IP67
Dimensions (mm)	56 x 18 (dia)	38 x 18 x 13	60 x 18 (dia)
Ambient temperature range (operational)	-10°C to 60°C	-10°C to 60°C	-10°C to 60°C
Speed of response	1 msec	0.5 msec	2 msec
Cable length	5 m	5 m	5 m
Compatibility with mounting brackets	FA099050 FA62035	Bracket supplied for production line mounting	FA099050 FA62035
Other information	Plastic lens	Plastic lens Supplied with reflector Light / dark switching selected by wiring	

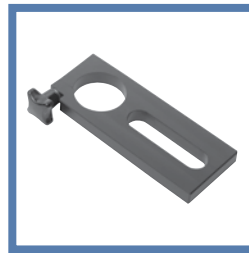
Sensor type	 Background suppression sensor FA61079	 Colour registration mark scanner FA61078	 Through beam fibre-optic sensor FA63069	 Reflective fibre-optic sensor FA536002
Operating principle	Infra red light reflected off a product in the area of focus	Visible light reflected off small areas of the product	Product breaks a visible light beam carried by fibre-optic cables from a control unit	Product reflects visible light carried by fibre-optic cables from a control unit
Application	Where the background is likely to interfere with triggering, for example ridged conveyors or products that contrast poorly with the background	Detects small registration printed onto continuous rolls of packaging film and labels, including very small marks moving at high speed. Detects black and colour marks	For use in inaccessible places and to scan small items or items with only a small gap between them	For use in inaccessible places and to scan small items
Sensing range	90 – 105 mm	9 – 12 mm (adjustable)	Up to 250 mm (adjustable)	Up to 50 mm (adjustable)
Material	M18 Nickel plated brass body and nuts	Rectangular diecast zinc enclosure	Control unit: Rectangular polycarbonate housing Fibre-optic cables: Polyethylene coated plastic fibres	
Environmental protection rating	IP67	IP67	IP67	IP67
Dimensions (mm)	93 x 18 (dia)	66 x 42 x 15	Control unit: 39 x 31 x 13 Fibre-optic end fittings: M4	Control unit: 39 x 31 x 13 Fibre-optic end fitting: M6
Ambient temperature range (operational)	-10°C to 60°C	-10°C to 60°C	-10°C to 60°C	-10°C to 60°C
Speed of response	0.2 msec	0.3 msec	0.5 msec	0.5 msec
Cable length	5 m	5 m	Electrical cable: 5 m Fibre-optic cables: 2 m (can be cut on site)	Electrical cable: 5 m Fibre-optic cables: 2 m (can be cut on site)
Compatibility with mounting brackets	FA099050	Use of through holes in the body or the bracket supplied gives a variety of mounting options	DIN-rail mount or surface mount using the bracket supplied	DIN-rail mount or surface mount using the bracket supplied
Other information	Plastic lens	Light / dark switching selected by wiring	Minimum bend radius of fibre-optic cables: 9mm	Minimum bend radius of fibre-optic cables: 9mm

Mounting brackets



Sensor mounting bracket FA099050

To mount M18 bodied sensors onto the printhead bracket or other suitable surface on the production line. Can be rotated in two different planes to get the best orientation of the sensor.



Sensor cover tube mounting bracket FA62035

Simple acetal bracket that clamps directly onto the Linx printhead cover tube and allows M18 bodied sensors to be positioned immediately adjacent to the printhead.

Dimensions (mm): 149 x 58 x 13

Sensor accessories



Splitter box FA63012

The splitter box allows one product sensor and one encoder to be connected to up to 4 printers.



PDEM cable FA63040

This cable enables printers to be daisy-chained together so that one product sensor can drive up to 8 printers, and one shaft encoder can drive up to 4 printers.



'D' type extension cable FA63034

Shaft encoders for the Linx 8900 Series CIJ printer

Production lines are typified by intermittent stop-starts and variable speeds.

Linx ink jet printers that code and mark the products moving along these lines can automatically compensate for this variability and ensure consistently high print quality and correct print position on the products. Shaft encoders installed on the production line and linked to the printers are a straightforward way of achieving this.

With their industrial bearings, shielded bodies, screened cables, and IP65 seals, Linx shaft encoders are rugged and designed to withstand the demands of harsh production environments.

Reliable and robust encoders – low maintenance and long life

Tested with Linx printers – meet E.U. and U.S. EMC standards

Fitted connectors – ready to install

Comprehensive range of wheels to achieve desired print width

Mounting accessories for convenient installation

Shaft encoders



2500 PPR* Shaft encoder
- IP67
FA61110

5000 PPR* Shaft encoder
- IP67
FA61112

10000 PPR* Shaft encoder
- IP67
FA61114

*Pulses per revolution

Compatible wheels

500mm fluted hytrel wheel
24mm wide
FA910042

500mm rubber wheel
6mm wide
FA910020

333mm rubber wheel
9mm wide
FA910043

200mm polyurethane wheel
24mm wide
FA910024

200mm rubber wheel
6mm wide
FA910023

200mm fluted hytrel wheel
12mm wide
FA910006

Mounting brackets and couplings for shaft encoders

Shaft encoders can be mounted to be driven by a convenient drive shaft, the conveyor, or the product itself (if continuous).

Linx offers a choice of brackets to make installation as convenient and robust as possible.



Flat, bendable bracket
FA61098

Designed for installing an encoder into a tight spot, this bracket can be adjusted on site by bending it to fit the application. If a stiffer bracket is required, two can be used together.

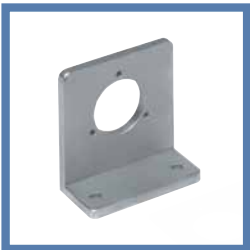
Dimensions (mm):
110 high x 60.75 wide x 1.2 thick



Spring coupling
FA910039

Good general-purpose aluminium coupling, allowing for shaft misalignment.

Dimensions (mm): 16 dia x 35 long



L-shaped flange
FA61096

This bracket holds the encoder securely at a right angle to the production line mounting surface.

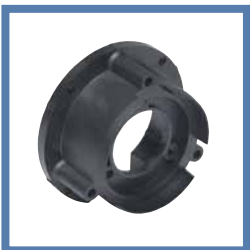
Dimensions (mm):
76.2 high x 75 wide x 38.1 deep



Spring coupling
FA910040

Good general-purpose coupling. Made of stainless steel, it is ideal for hygiene-critical applications.

Dimensions (mm): 16 dia x 25.4 long



Bell housing
FA910034

A neat way of mounting the encoder onto the ends of shafts using the Oldham coupling. The housing holds the encoder rigidly and protects the coupling from damage and contamination.

Dimensions (mm): 82.5 dia x 38.4 high



Oldham coupling
FA910041

A short coupling for mounting on the ends of shafts, especially with the Bell housing.

Dimensions (mm): 19 dia x 26 long

Alarms and RS232 communications for the Linx 8900 Series CIJ printer

Linx offers single-stage alarms as standard accessories, and volt-free contacts that can be added to the Linx 8900 printer for customer alarms.

RS232 is a legacy technology replaced by USB and Ethernet. Linx offers an RS232 connection on the 8900 printer as an accessory to connect to legacy systems.

Linx standard alarms



The flashing light can be used to indicate any one of a number of printer conditions, for example low ink or solvent levels and disabled print.

All alarms feature:

- Flashing frequency: twice per second (2 Hz)
- IP55 rated

They are compatible with the same Linx poles used to support printheads and wash stations.

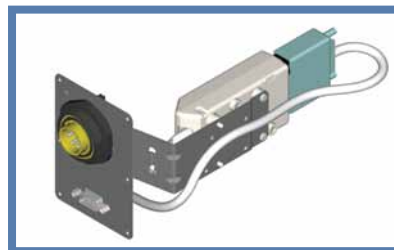
Pole mount alarm beacon
FA64006

Audio/Visual alarm
FA64017

Extra cable tidies to secure alarm cables to poles
FA62059

Spare alarm lens cover
FA71083

Linx non-standard alarm connections and RS232



Most customer alarms have switched inputs. These can be controlled by the VFC (Volt Free Contact) 8900 accessory.

RS232 outputs provided with VFC contacts, or are available without a VFC.

RS232 with VFC
FA11207

RS232 connection only
FA11206

Air knives for the Linx 8900 Series CIJ printer

If the product to be coded is wet or damp, an air knife connected to factory air and positioned before marking can dry the area enough to allow good ink adhesion.

Linx air knives are easily attached to the printhead at the optimal position for efficient drying.



Air knife kit
FA74276

Spare air nozzle
FA72163

Barcode scanners for the Linx 8900 Series CIJ printer

These scanners are from a world-class manufacturer and are useful for QuickSwitch® and similar applications.

Use of Linx scanners guarantees compatibility with Linx software and hardware, and will be given technical support by Linx.



RS232 1D/2D barcode scanner with lead
FA63072

PSU requires c8 connector with country specific plug.

Reads all standard barcode formats. Contact Linx technical support for compatibility with specific applications and code formats.



Power supply for 1D/2D barcode scanner
FA63073

Spare PSU requires c8 connector with country specific plug.



Scanner wall/desk holder
FA62581

www.linxglobal.com



THINKING ALONG YOUR LINES

For more information, contact Linx Printing Technologies Ltd, Linx House, 8 Stocks Bridge Way, Compass Point Business Park, St Ives, Cambs, PE27 5JL, UK.
Telephone +44 (0)1480 302100 Fax +44 (0)1480 302116 email sales@linx.co.uk www.linxglobal.com

Linx and QuickSwitch are registered trademarks of Linx Printing Technologies Ltd.
© Linx Printing Technologies Ltd 2016.