

Printer and printhead mountings for Linx impulse jet printers

Linx offers a wide range of mounting accessories for positioning impulse jet printers and printheads onto production lines.

Printer mountings comprise robust stainless steel cabinets and tables, which can be moved easily, as required.

The Linx range of new-style printhead mountings offers one of the most versatile means of mounting close to the product to be marked while providing a rigid and robust construction, using 42 mm diameter stainless steel tubes.

Accurate positioning and angling of the impulse jet printhead, with precise

adjustment of the throw distance, are essential to achieve good print quality, especially for bar codes. The new range incorporates a number of unique design features that facilitate the fine adjustment of the printhead position in relation to the substrate to be printed. Applications requiring orientation at non-standard angles can be easily accommodated.

The range of mountings includes predefined mounting assemblies. The individual parts are fully interchangeable, allowing customers to create their own application-specific arrangements.

Accurate printhead positioning

Many mounting options

Well designed parts are quick and easy to assemble and install

Wide range of interchangeable parts to meet current and future requirements

Made of stainless steel and other tough materials for durability

Printer mountings



Self-assembly printer cabinet FA62569

Of robust design, the self-assembly printer cabinet is made of stainless steel. It can be packed flat for transport and easily assembled without any tools. Its shelf and lockable door allow for secure storage of ink and other items. It has lockable castor wheels so that it can be easily moved to and secured in a new location.

Dimensions (mm): 770 H x 454 W x 477 D



Printer table FA62034

This mounting table can accommodate either one or two printers, and is made of stainless steel. Two wheels and two feet enable the table to be permanently sited or moved around as required. With safe and economical shipping in mind, the table is supplied in an easily assembled flat-pack form.

Dimensions (mm): 695 H x 600 W x 535 D

Printhead mountings



Adjustable printhead mounting boss (Horizontal Print) – FA36017

This mounting boss screws into the horizontal gantry tube and fixes directly to the rear casting of the printhead when printing horizontally. It allows the angle of the head to be finely adjusted from its horizontal position to match the angle of the substrate to be printed. Complete with two adjustment screws.



Adjustable printhead mounting plate (Vertical Print) – FA36015

This mounting plate screws into the horizontal gantry tube and fixes directly to the base plate of the printhead when printing vertically down or up and allows the angle of the head to be finely adjusted from its vertical position to match the angle of the substrate to be printed. Complete with two adjustment screws.



Base – free standing floor mount – FA36018

A strong tripod base that prevents tilting. To build a moveable printhead mounting structure.

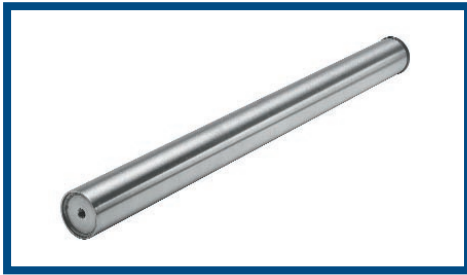


Base – fixed floor mount – FA36014

A solid disc base for bolting to the floor.

Dimensions (mm): 92 h* x 200 Ø

* includes boss



Gantry tubes

Three different lengths of 42 mm diameter stainless steel tubes provide complete flexibility in printhead mounting configurations as the tubes can be used vertically or horizontally. The printhead mountings for both horizontal and vertical printing can be attached to these tubes when used as the cross tube in an assembly.

Gantry tube 0.5m – FA36012

Gantry tube 1.0m – FA36011

Gantry tube 1.5m – FA36024



Cross clamp and adjuster assembly – FA36013

Allows two tubes to be mounted firmly and securely at right angles to each other and provides up to 20 mm of fine adjustment of the tube positions in both axes.



Parallel tube clamp and adjustment assembly – FA36077

a) Allows two tubes to be mounted firmly and securely at right angles to each other and provides up to 20 mm of fine adjustment of the tube position in one axis.

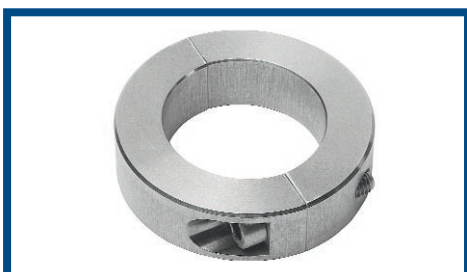
b) Can also be used to mount two tubes parallel to each other.



Cross clamp assembly (no adjuster) – FA36021

Allows two tubes to be mounted firmly and securely at right angles to each other where no fine adjustment is required.

Miscellaneous accessories



Collet stop – FA36023

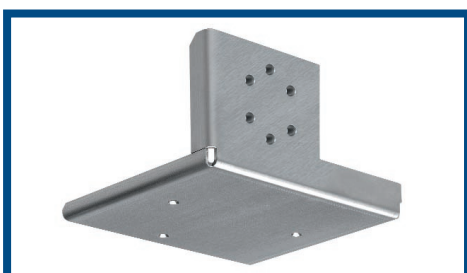
A clamping ring that can be fixed to a horizontal cross tube either side of the cross clamp to act as an end stop for printhead adjustments.

Adjustment screw – FA36026 (not illustrated) Can be used with both horizontal and vertical angle printhead mountings.

42 mm Cap - FA36016 (not illustrated) To cap off the 42mm tubes.

60 X 40 mm End cap – FA36019 (not illustrated) To cap off the profile section on FA36018 free standing floor mount base.

Mounting flange for third party gantry systems – FA36022 (not illustrated) A clamp to connect the 42 mm cross tube supporting a printhead to third party modular gantry systems.



Low profile mounting plate – FA30030

Required for mounting printheads without the rear casting feature for horizontal print applications.

Standard printhead mounting assemblies

These are packs containing the parts necessary for the most common printhead mounting positions. The height of the printhead mounting can be adjusted manually via the cross clamp. These assemblies can be modified quite easily by adding new parts.

All standard printhead mounting assemblies include the cross clamp and adjuster assembly and feature a 1m vertical tube and a 0.5m horizontal tube.



Floor mount gantry assembly – fixed, vertical printhead – FA36007

For permanent installations where the printhead prints vertically up or down.



Floor mount gantry assembly – free standing, vertical printhead – FA36009

For freely moveable installations where the printhead prints vertically up or down.



Floor mount gantry assembly – fixed, horizontal printhead – FA36008

For permanent installations where the printhead prints horizontally.



Floor mount gantry assembly – free standing, horizontal printhead – FA36010

For freely moveable installations where the printhead prints horizontally.

Please note that the printhead mountings are not compatible with Linx CIJ printers.

Tube specification

41.1mm outside diameter x 1.6mm wall thickness.
Cold drawn seamless stainless steel tube.

For more information please contact the Linx Sales Office on:

Tel: 01480 302130 Fax: 01480 302116 Email: uksales@linx.co.uk

www.linxglobal.com



THINKING ALONG YOUR LINES

Linx Printing Technologies, Burrell Road, St Ives, Cambridgeshire PE27 3LA, UK.

Tel: +44 (0) 1480 302100 Fax: +44 (0) 1480 302116 Email: uksales@linx.co.uk Website: www.linxglobal.com

Linx is a registered trademark of Linx Printing Technologies